

Industries Served



QMax delivers reliable, high-performance process heating solutions to industrial facilities all over the world. We simplify complex projects with custom heating systems built to be efficient with every BTU in mind. Whether processing sulphur, heavy hydrocarbons, chemicals or food oils, QMax works with your team to design optimum solutions to save energy and reduce downtime.

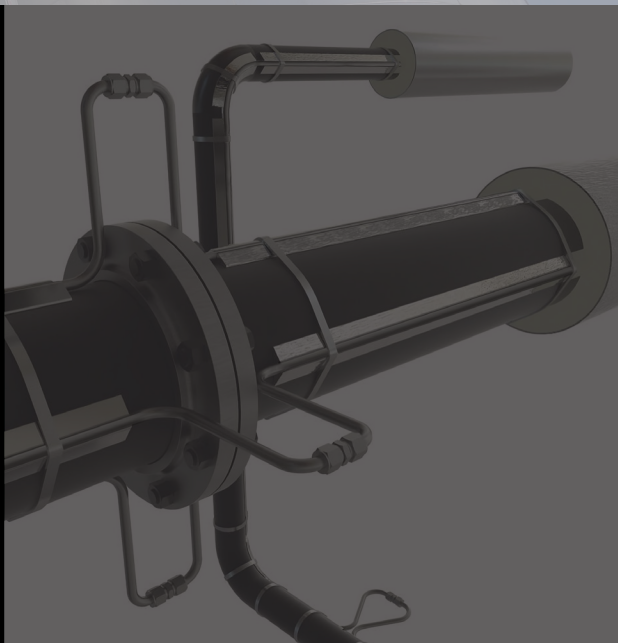


“

If you're not using the QMax system, you're spending too much.

”

– Robert Hager
Manager of Special Projects
Eastman Chemical Company



State-of-the-Art Heat Tracing & Jacketing for Process Piping

High Performance, Reduced Downtime



“

We're dedicated to delivering cutting-edge solutions that drive value for our customers.”

Thomas W. Perry, President

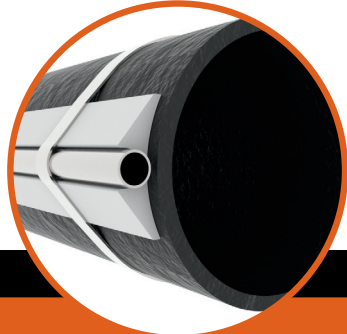
QMax Industries, based in Charlotte, North Carolina, USA, is a leading innovator in process heating technologies - Simplifying projects, delivering performance.

Our specialties include:

- ✓ Jacketed Piping Systems
- ✓ High-Performance Heat Tracing
- ✓ Tank & Vessel Heating
- ✓ Equipment Jacketing
- ✓ Heating Medium Process Design
- ✓ Header to Header Steam & Hot Oil Systems



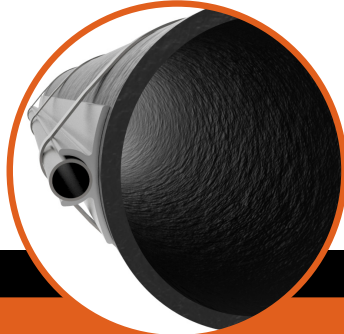
Fluid Tracing Systems



QMax FTS Best-In-Show

Maximizes performance of standard heat tracing using an aluminum channel to conduct heat into the process pipe, delivering guaranteed heating results.

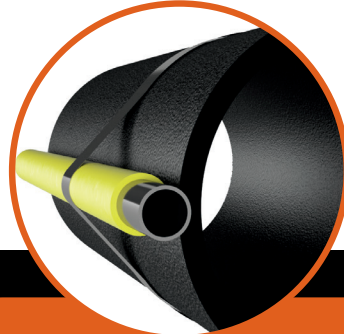
Best for Steam Tracing



QMax LITE Light Steam Tracing

Transforms the nature of the tracer from inefficient convective heat transfer to high-efficiency conductive heat transfer.

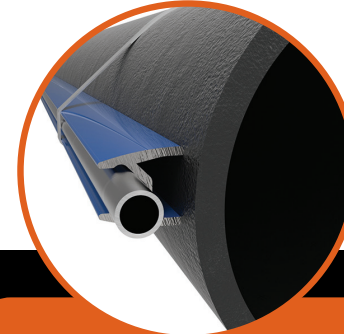
Best for Glycol Tracing



QMax Viperline Insulated Tracing

Delivers a reduced yet predictable heat output that prevents hot spots and overheating, minimizes energy loss, and enhances safety compared to bare metal tube tracers.

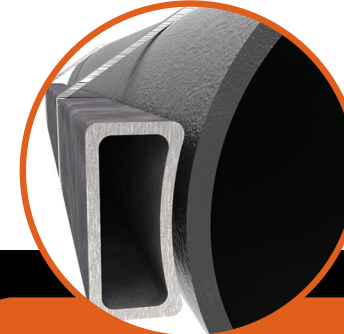
Best for Low Temp Tracing



QMax FPX Freeze Protection

Continuous steam tracing standoff designed specifically for pipeline freeze protection. Mitigates hot spots while offering predictable process temperatures.

Best for Freeze Protection



QMax CST Carbon Steel Tracing

Contoured for a variety of pipe sizes. Custom-designed and fabricated for each piping system to guarantee performance.

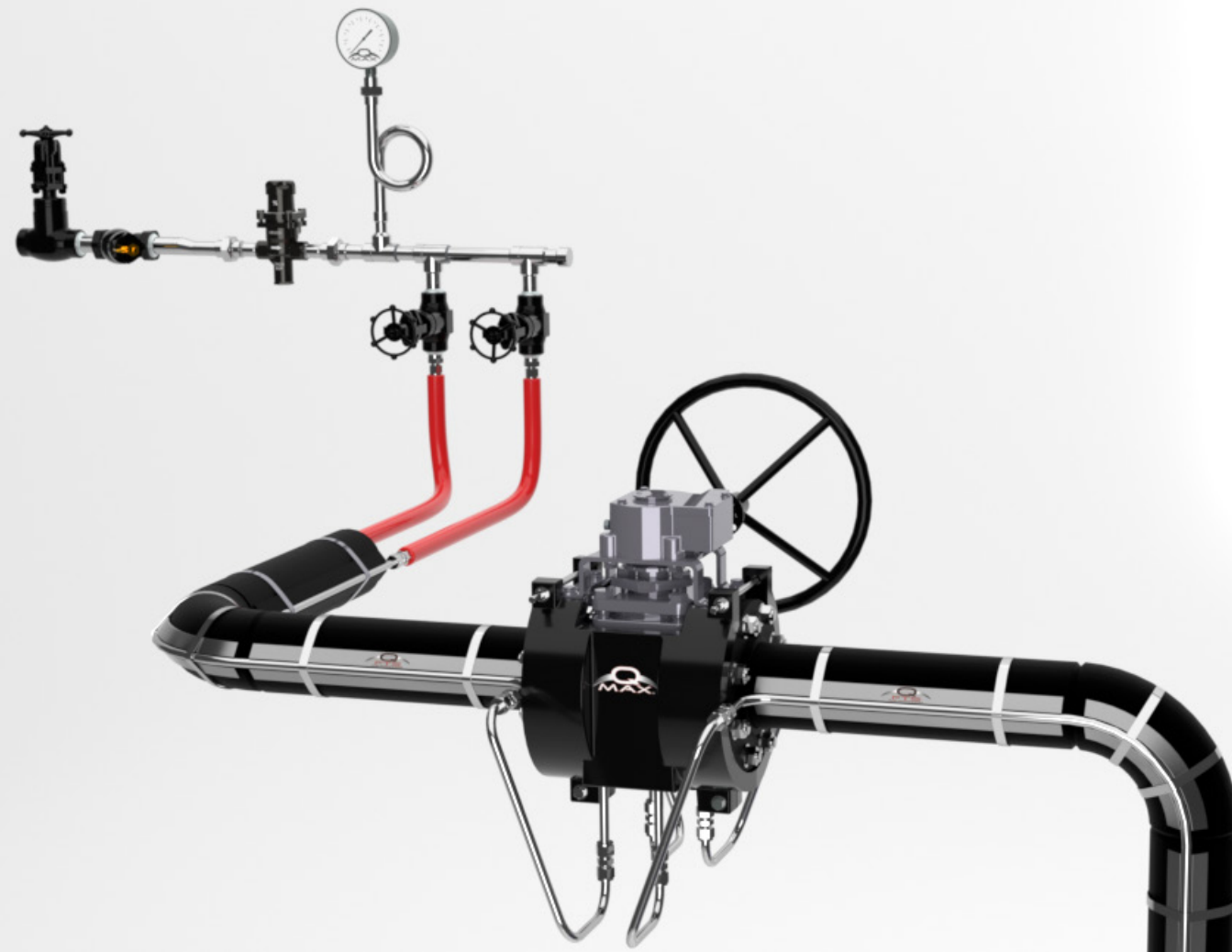
Best for Long Run Hot Oil



QMax Jacketed Pipe Critical Heating and Cooling

Provides uniform heating or cooling by circulating a secondary medium around the core pipe, ensuring precise temperature control for critical processes.

Best for Critical Processes



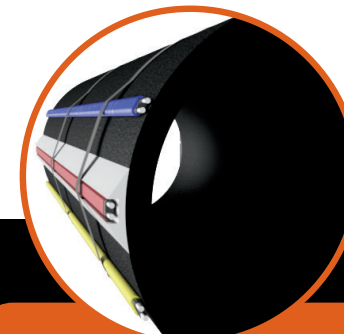
Electric Tracing Systems



QMax MI Cable Electric Tracing System

Mineral-insulated cable provides robust, high-temperature heat tracing (up to 1000°F), ideal for extreme industrial applications requiring maximum durability and thermal stability.

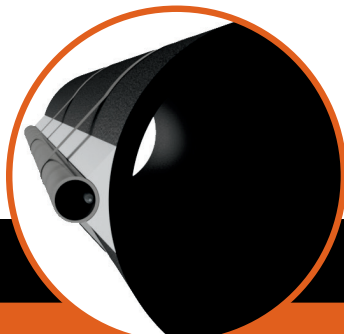
Best for High-Temp Tracing



QMax SR Cable Electric Tracing System

Self-regulating cable adjusts heat output along its length, delivering safe, energy-efficient temperature maintenance up to roughly 300°F for pipelines, valves, and vessels.

Best for Low Temp Tracing



QMax SEET System Electric Tracing System

Skin effect electric tracing cable ensures constant wattage for long pipe runs, typically used for mid-to high-temperature applications up to roughly 750°F.

Best for Long Pipelines